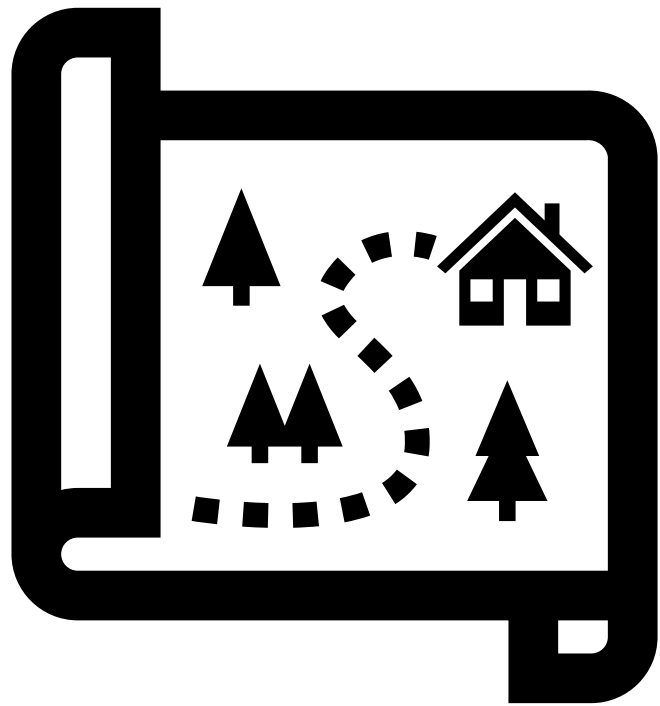


# Williamson County Growth Plan Update

**Town of Thompson's Station**

**Virtual Meeting**

**September 21, 2021**



## Growth Plans in Tennessee Recap

- Every County in TN has one
- The Growth Plan determines where & how a municipality can annex new territory through Urban Growth Boundaries (UGB)
- Country Mayor Anderson opened Williamson County's Growth Plan Update process
- Town has hosted 2 open house meetings to date
- This is the Town's opportunity to plan for our growth through 2040

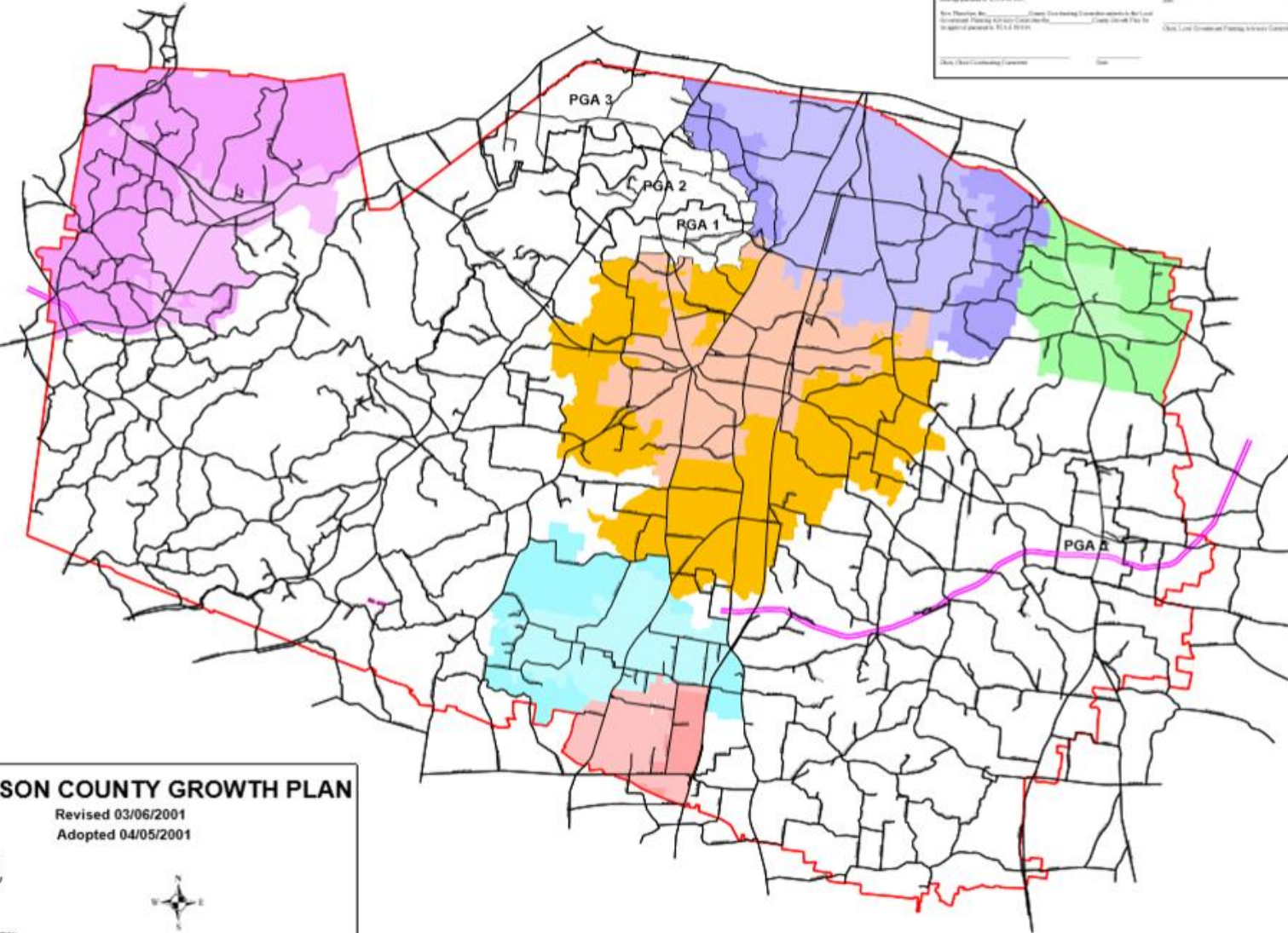
# How the Growth Plan will be updated



- **Coordinating Committee**
  - Overall oversight
- **City Planners Group**
  - Responsible for the hands-on planning work made up of planners from each municipality in the County
- **Technical Advisors**
  - Consulted as needed- public works departments, county highway, traffic planners, utility representatives, etc.

# ADOPTED COUNTYWIDE GROWTH PLAN

Resolution of County Growth Plan and Certificate of Rezonation	Resolution of Approval By The Local Government Planning Advisory Committee
Whereas, the County Planning Commission has adopted and approved the County Growth Plan and Certificate of Rezonation for Williamson County, Tennessee, as provided in the attached exhibits, and	Whereas, the County Planning Commission has submitted a Certificate of Rezonation, as provided in the attached exhibits, and
Whereas, the County Growth Plan and Certificate of Rezonation are in accordance with the Tennessee State Growth Management Act, Chapter 129 of the Tennessee Code Annotated, and	Whereas, the County Planning Commission has adopted and approved the County Growth Plan and Certificate of Rezonation, as provided in the attached exhibits, and
Whereas, the County Planning Commission has adopted and approved the County Growth Plan and Certificate of Rezonation, as provided in the attached exhibits, and	Whereas, the County Planning Commission has adopted and approved the County Growth Plan and Certificate of Rezonation, as provided in the attached exhibits, and
Now, Therefore, the County Planning Commission hereby approves the County Growth Plan and Certificate of Rezonation, as provided in the attached exhibits, and	Whereas, the County Planning Commission has adopted and approved the County Growth Plan and Certificate of Rezonation, as provided in the attached exhibits, and
Done this _____ day of _____, 2001.	Done this _____ day of _____, 2001.
_____ Chair, County Planning Commission	_____ Chair, Local Government Planning Advisory Committee



**WILLIAMSON COUNTY GROWTH PLAN**  
Revised 03/06/2001  
Adopted 04/05/2001

**Legend**

Major Road

County Boundary

PGA

Rezonation Line

GREENWOOD

FARM

HUNTSVILLE

HOLDENVILLE

SPRING HILL

THOMPSON STATION

**Uses**

Unincorporated UGD

FARM UGD

HOLDENVILLE UGD

Thompson Station UGD

FRENCH UGD

Spring Hill UGD

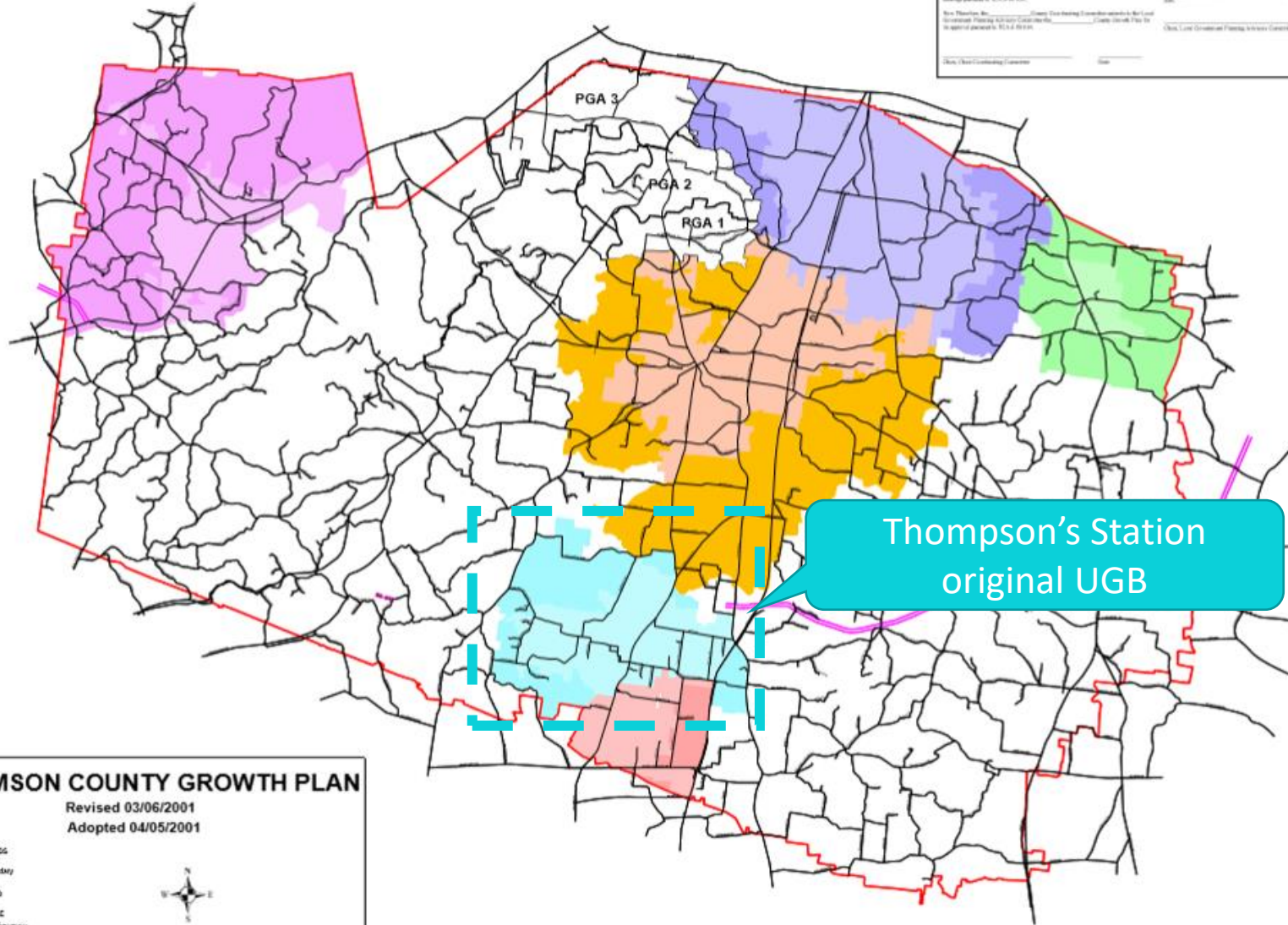
Note: Rural Areas Are All Properties Outside the UGDs and PGAs.

**WILLIAMSON COUNTY PLANNING DEPARTMENT**



# ADOPTED COUNTYWIDE GROWTH PLAN

Resolution of County Growth Plan and Certificate of Rezonation	Resolution of Approval By The Local Government Planning Advisory Committee
Whereas, the Planning Commission has adopted and approved the County Growth Plan and Certificate of Rezonation for the whole county with T.C.A. § 20-2-101, and	Whereas, the Planning Commission has adopted a Certificate of Approval for the County Growth Plan and Certificate of Rezonation, and
Whereas, the County and the Planning Commission have approved the Certificate of Rezonation for the whole county with T.C.A. § 20-2-101, and	Whereas, the Planning Commission has adopted the Certificate of Approval for the County Growth Plan and Certificate of Rezonation, and
Whereas, the County and the Planning Commission have approved the Certificate of Rezonation for the whole county with T.C.A. § 20-2-101, and	Whereas, the County and the Planning Commission have approved the Certificate of Rezonation for the whole county with T.C.A. § 20-2-101, and
Now, Therefore, the County Growth Plan and Certificate of Rezonation for the whole county with T.C.A. § 20-2-101, and	Now, Therefore, the County Growth Plan and Certificate of Rezonation for the whole county with T.C.A. § 20-2-101, and
Done, this _____ day of _____, 2001.	Done, this _____ day of _____, 2001.
_____ Chair, Planning Commission	_____ Chair, Local Government Planning Advisory Committee



**WILLIAMSON COUNTY GROWTH PLAN**  
 Revised 03/06/2001  
 Adopted 04/05/2001

Major Road  
 County Boundary  
 UGB  
 GREENWOOD  
 FARMINGTON  
 SPRING HILL  
 THOMPSON'S STATION  
 UGB  
 Greenwood UGB  
 Farmington UGB  
 Thompson's Station UGB  
 Spring Hill UGB

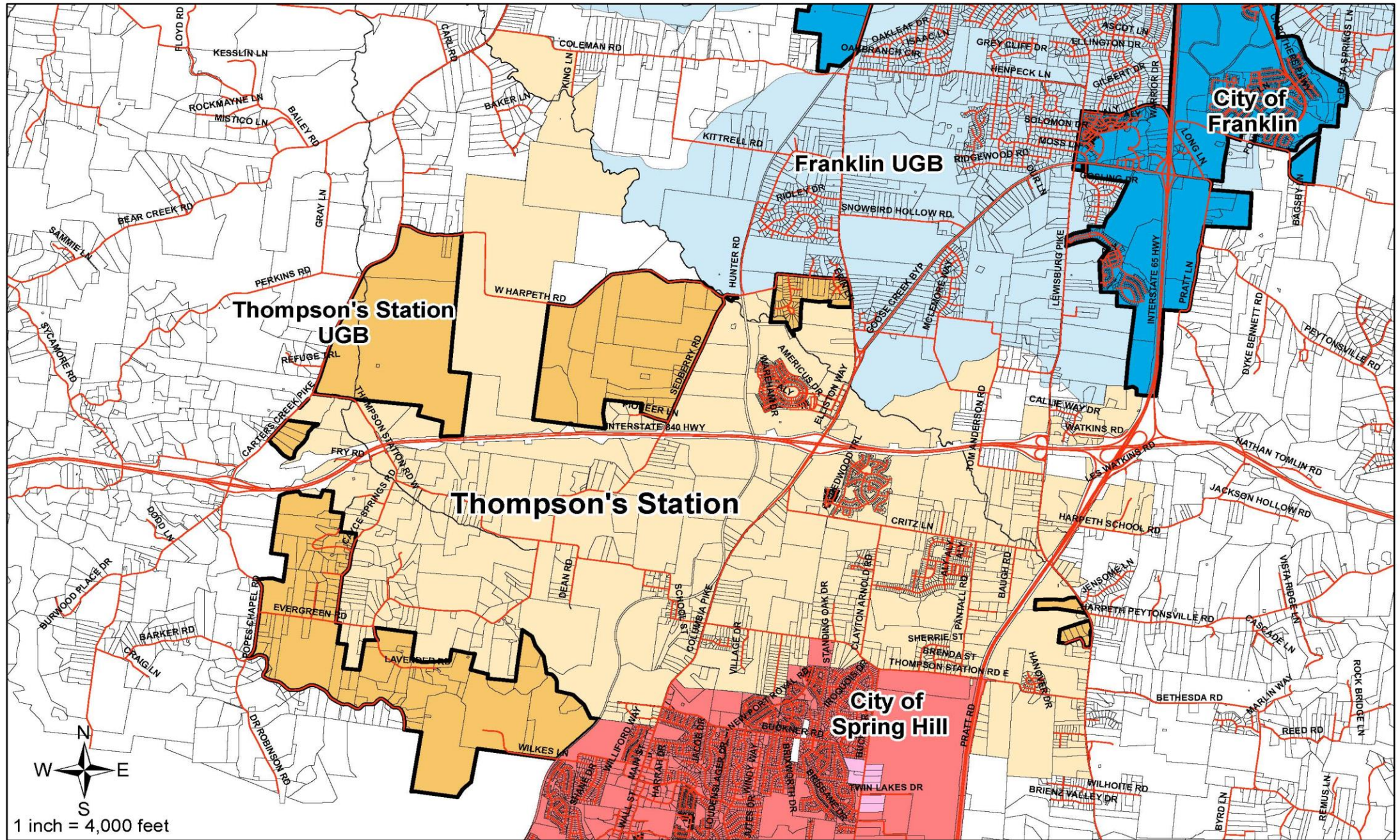
Note: Rural Areas are all properties outside the UGBs and PGAs.

**WILLIAMSON COUNTY PLANNING DEPARTMENT**

Thompson's Station original UGB



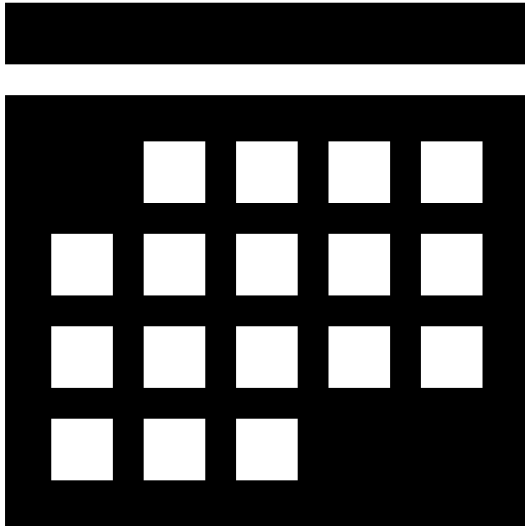
# CURRENT TOWN LIMITS & UGB







## Key Dates



- **October:** Draft Report submitted to County
- **October-December:** Review by Coordinating Committee of each jurisdiction's Growth Plan submittal
- **January 2022:** Coordinating Committee begins public review of Growth Plan Update
- **April 2022:** Legislative public hearings by each Town/City in the County.
- **May 2022:** State review/approval of the Growth Plan Update



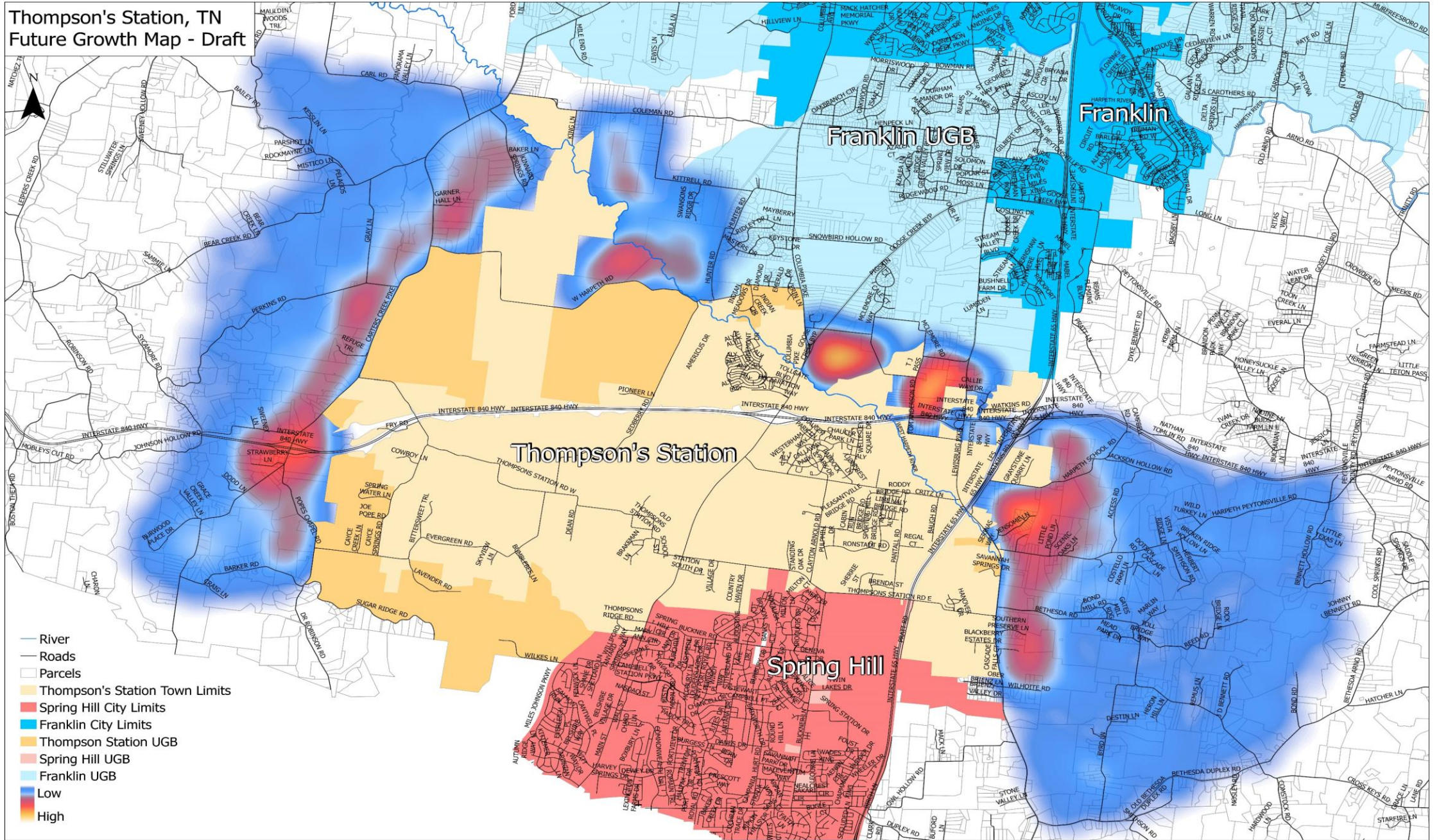
A close-up photograph of a map with several red pushpins. The pushpins are scattered across the map, with one in sharp focus in the foreground. The map shows streets and landmarks, including 'WALCOTT SQUARE' and 'ROAD'. The background is blurred, showing more pushpins and map details.

# Thompson's Station UGB Study Process



# TOWN UGB EXPANSION STUDY MAP

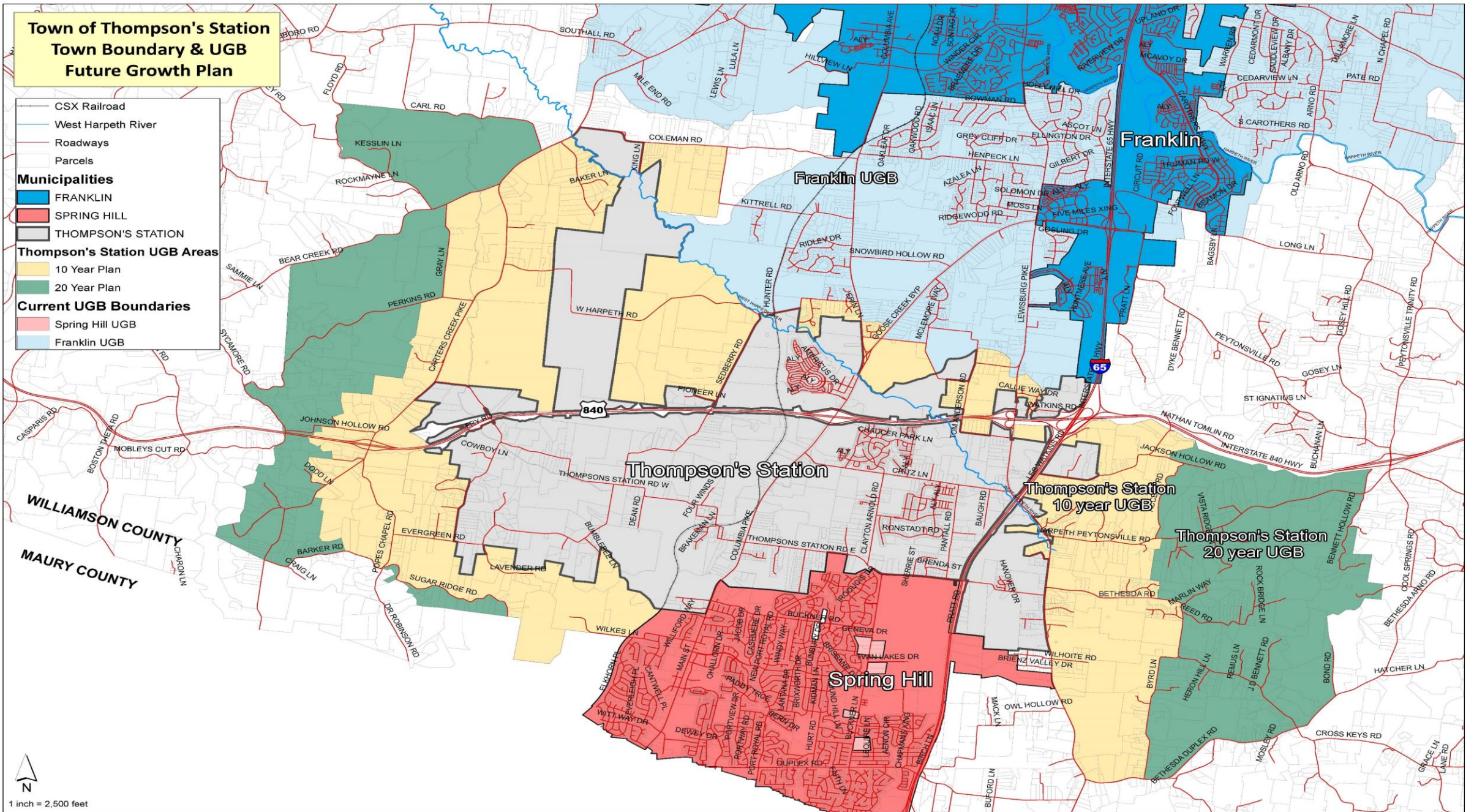
Thompson's Station, TN  
Future Growth Map - Draft



- River
- Roads
- Parcels
- Thompson's Station Town Limits
- Spring Hill City Limits
- Franklin City Limits
- Thompson Station UGB
- Spring Hill UGB
- Franklin UGB
- Low
- High



# TOWN UGB EXPANSION 10-20 Year Time Frame

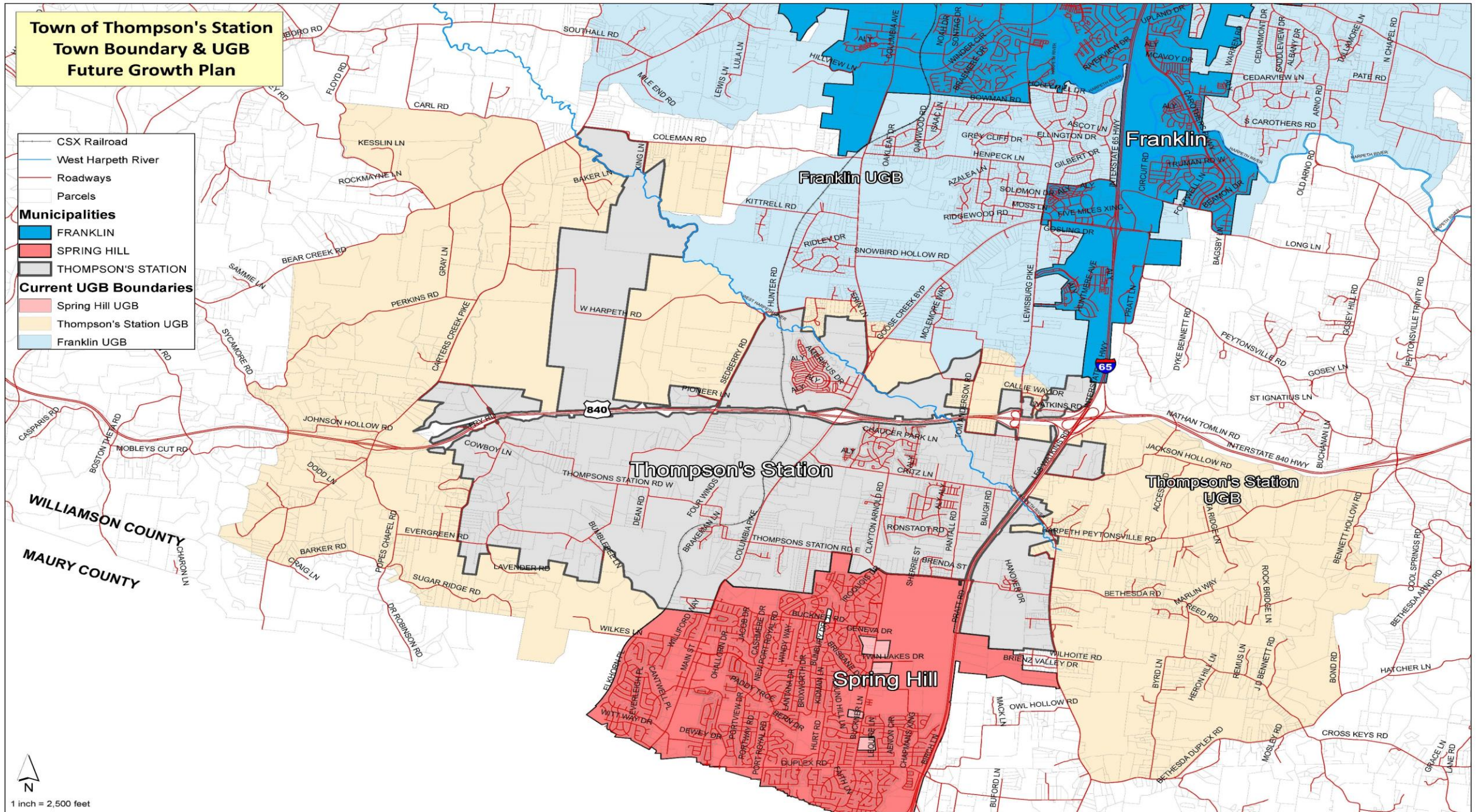




# TOWN UGB EXPANSION STUDY MAP

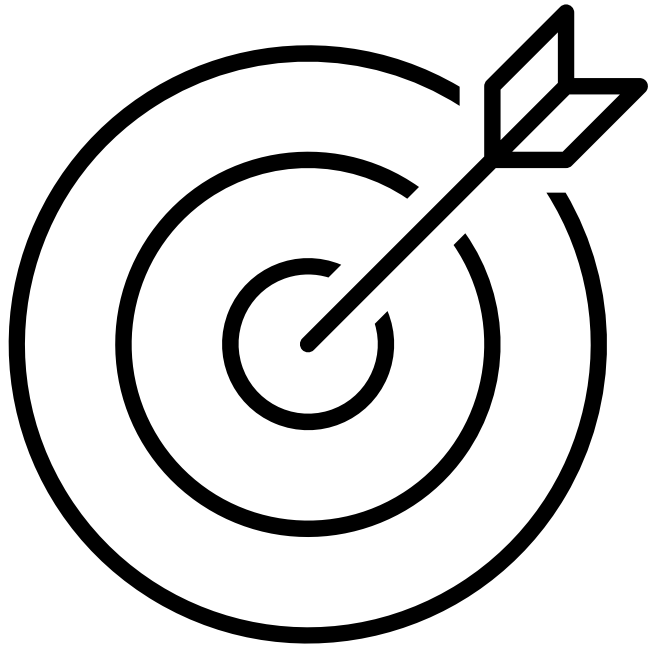
**Town of Thompson's Station  
Town Boundary & UGB  
Future Growth Plan**

	CSX Railroad
	West Harpeth River
	Roadways
	Parcels
<b>Municipalities</b>	
	FRANKLIN
	SPRING HILL
	THOMPSON'S STATION
<b>Current UGB Boundaries</b>	
	Spring Hill UGB
	Thompson's Station UGB
	Franklin UGB



1 inch = 2,500 feet





## Next Steps

- Town to provide report to County on Growth Plan Update
  - Will include: UGB Map, updated Annexation Policy, Plan of Services policy
- Please provide your comments-
  - Online:  
<https://www.surveymonkey.com/r/2VLJTJL>
  - Contact Town Planning Director Micah Wood [mwood@thompsons-station.com](mailto:mwood@thompsons-station.com) or 794-4333 ext. 3
- Stayed tuned to <https://www.thompsons-station.com/2358/Growth-Plan-Update---Urban-Growth-Bounda> for additional updates!

**Thanks for Joining!**

**Williamson County  
Growth Plan Update**

**Town of Thompson's Station**

**Virtual Meeting**

**September 21, 2021**